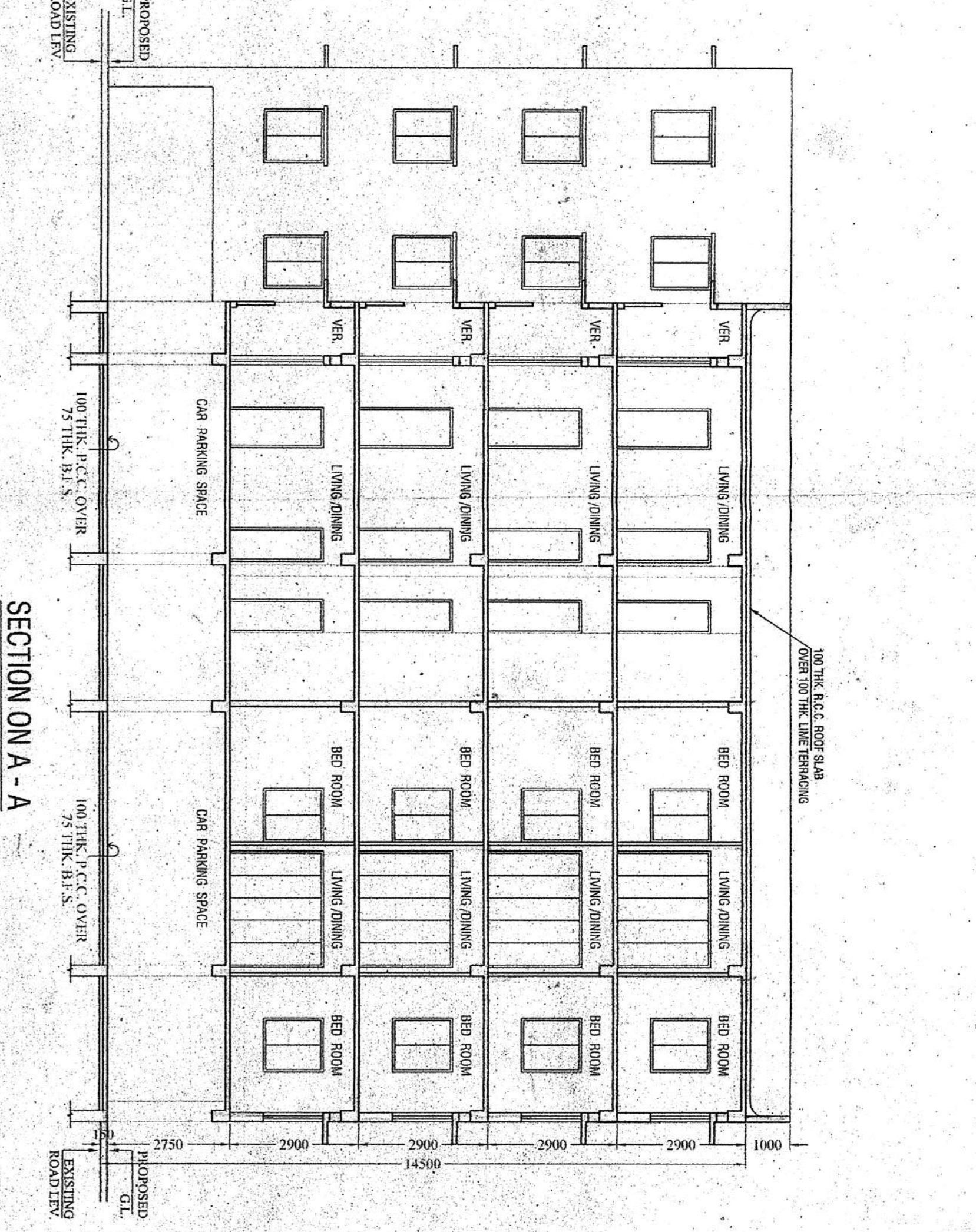
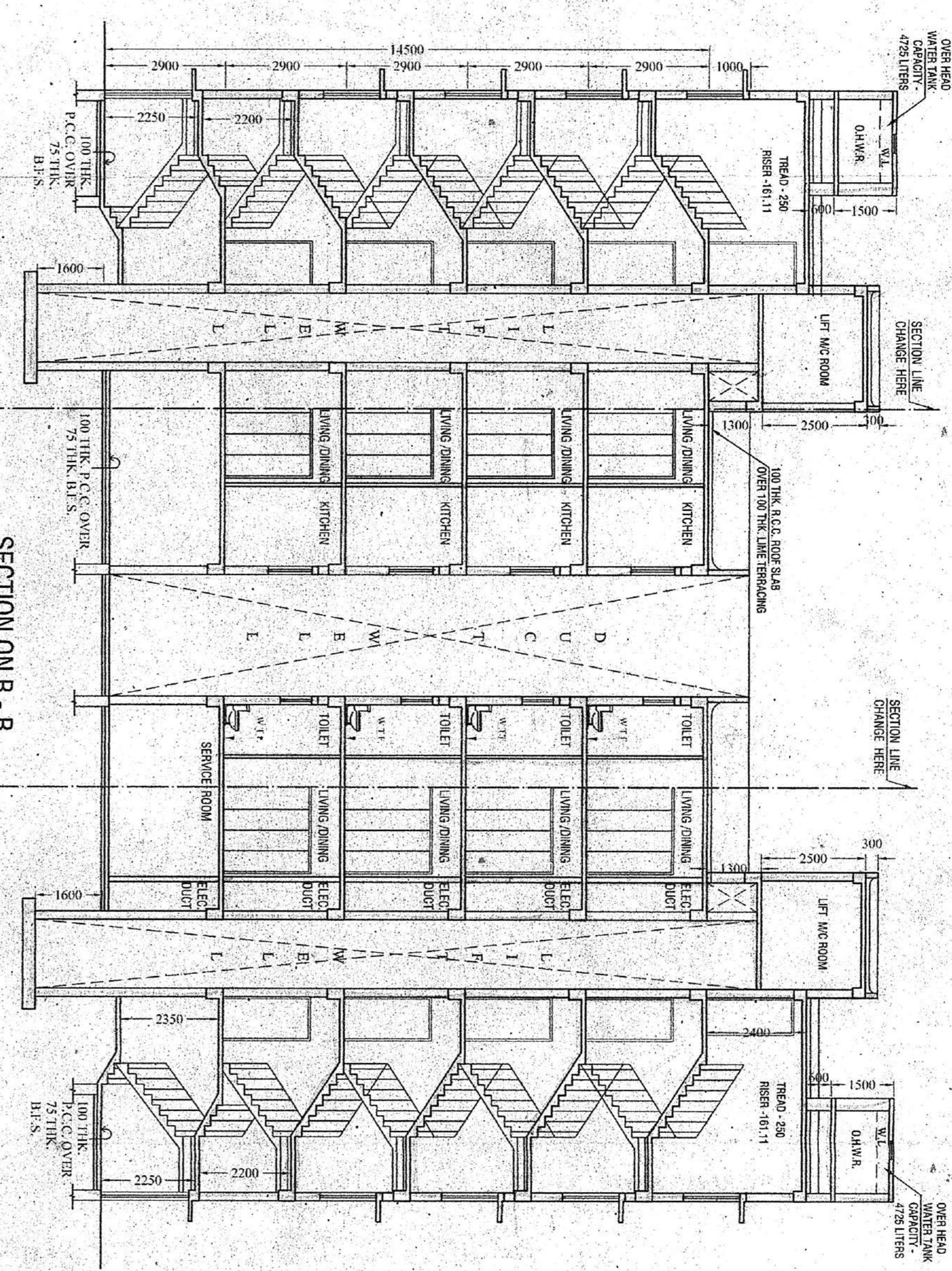


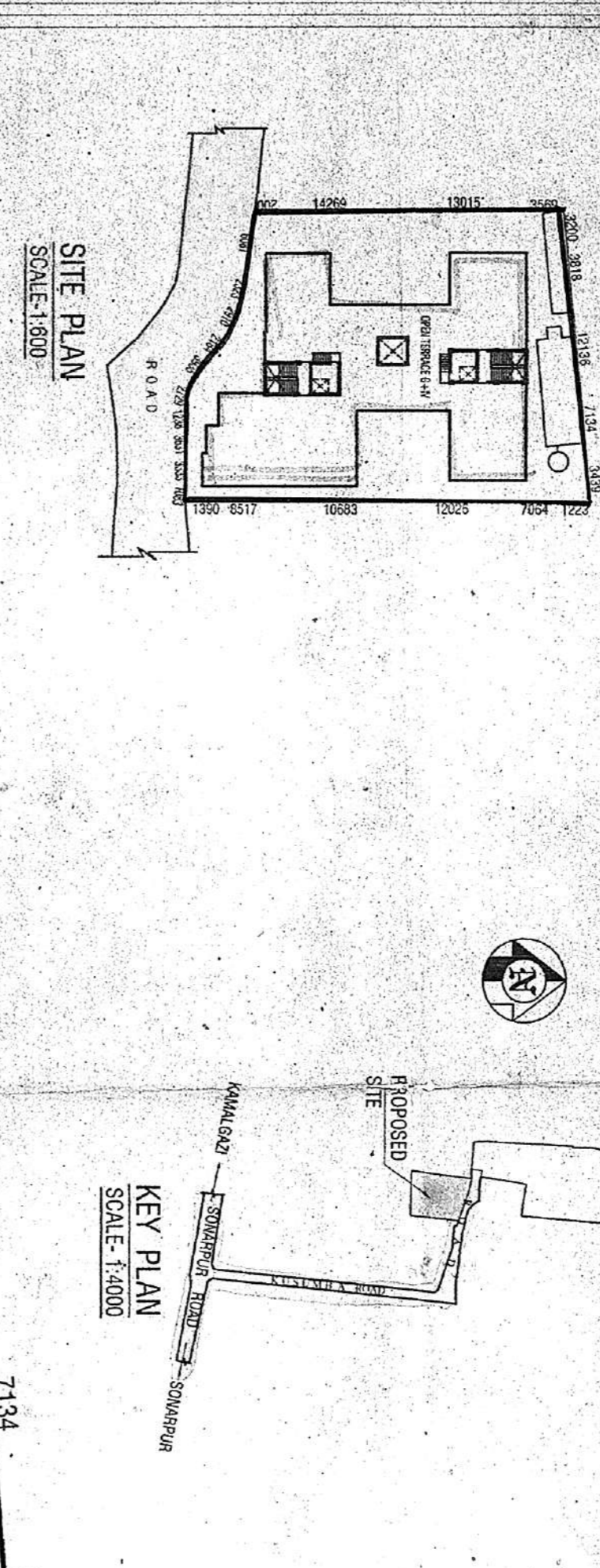
FRONT ELEVATION



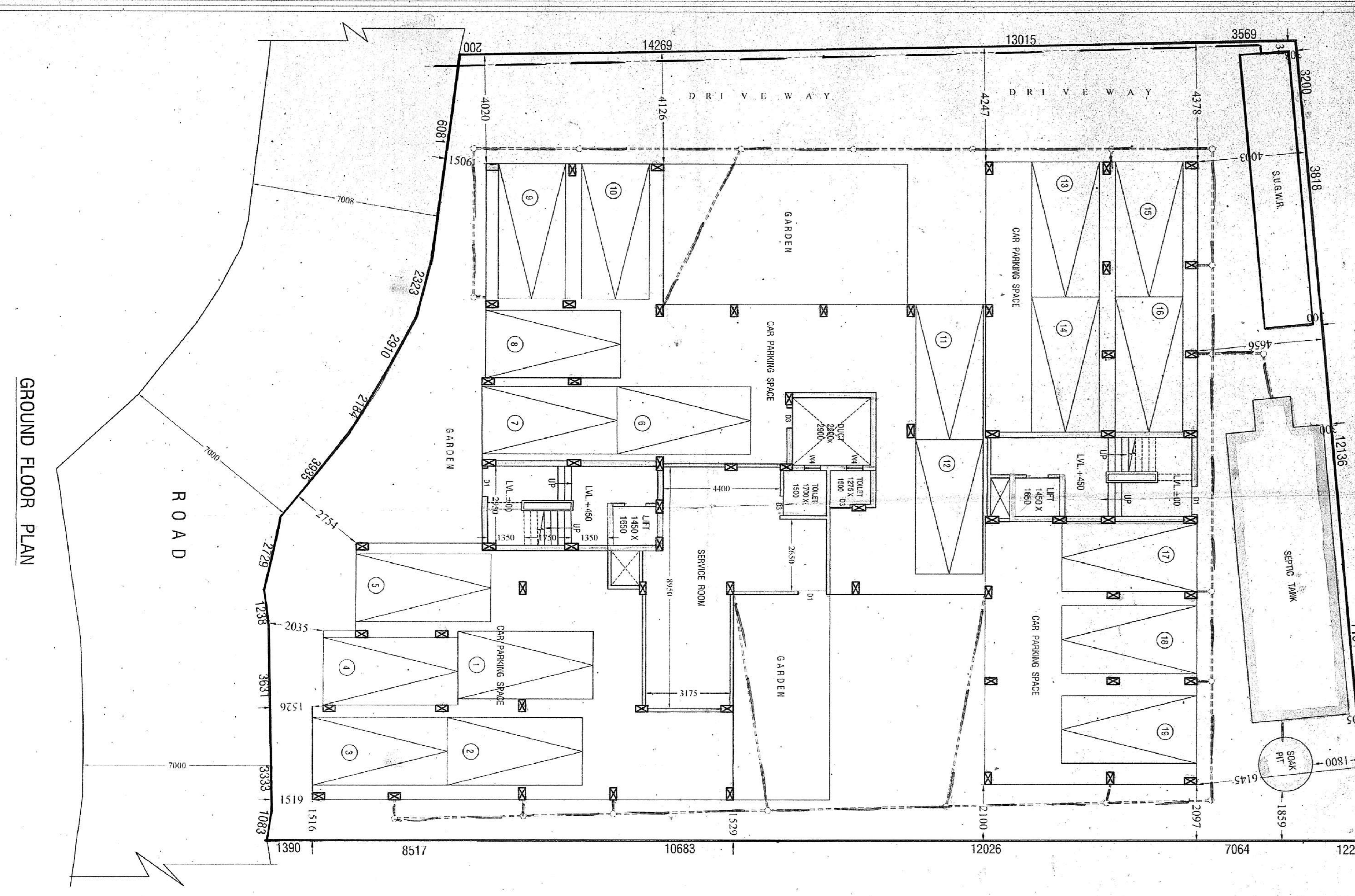
SECTION ON A-A



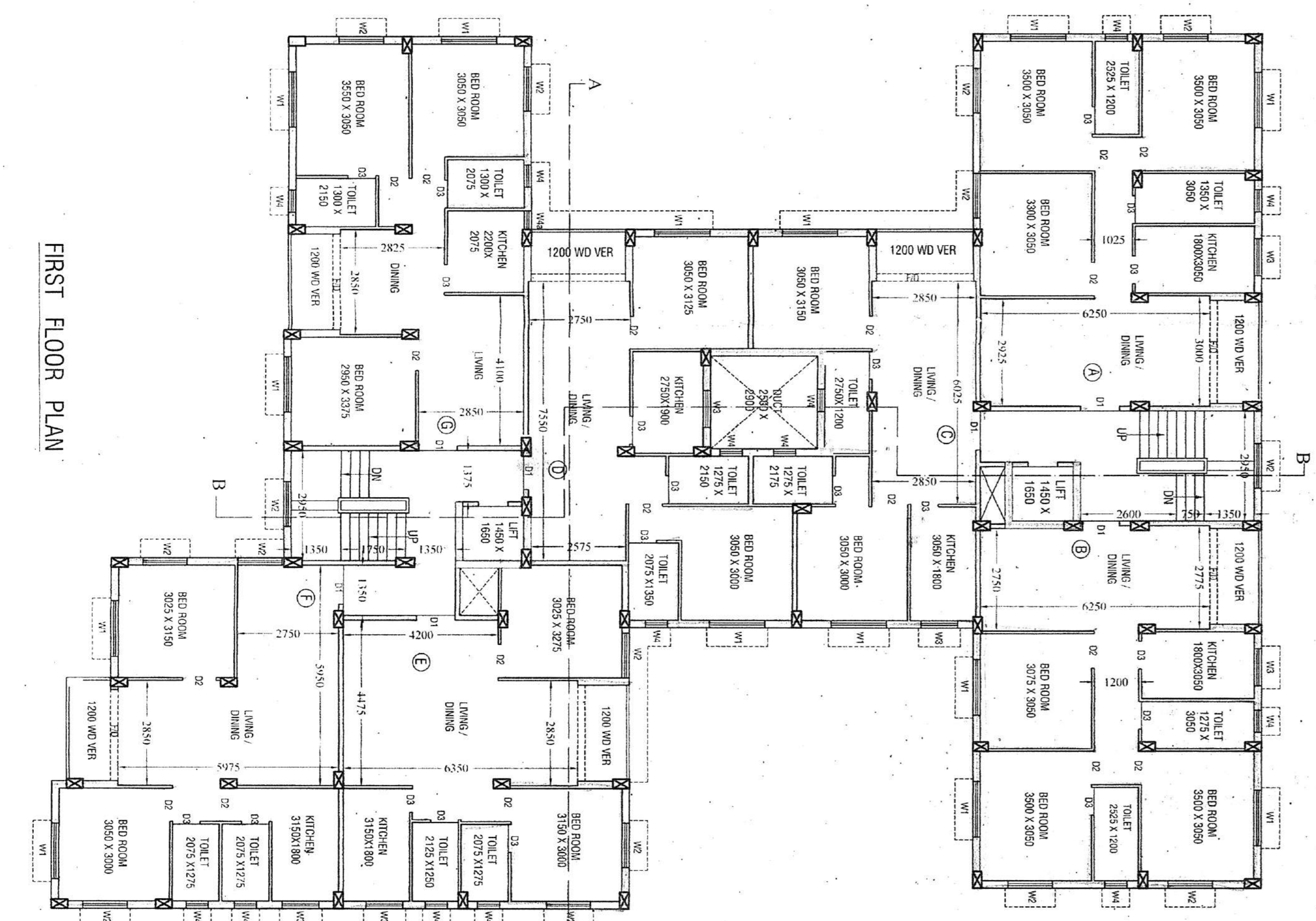
SECTION ON B-B



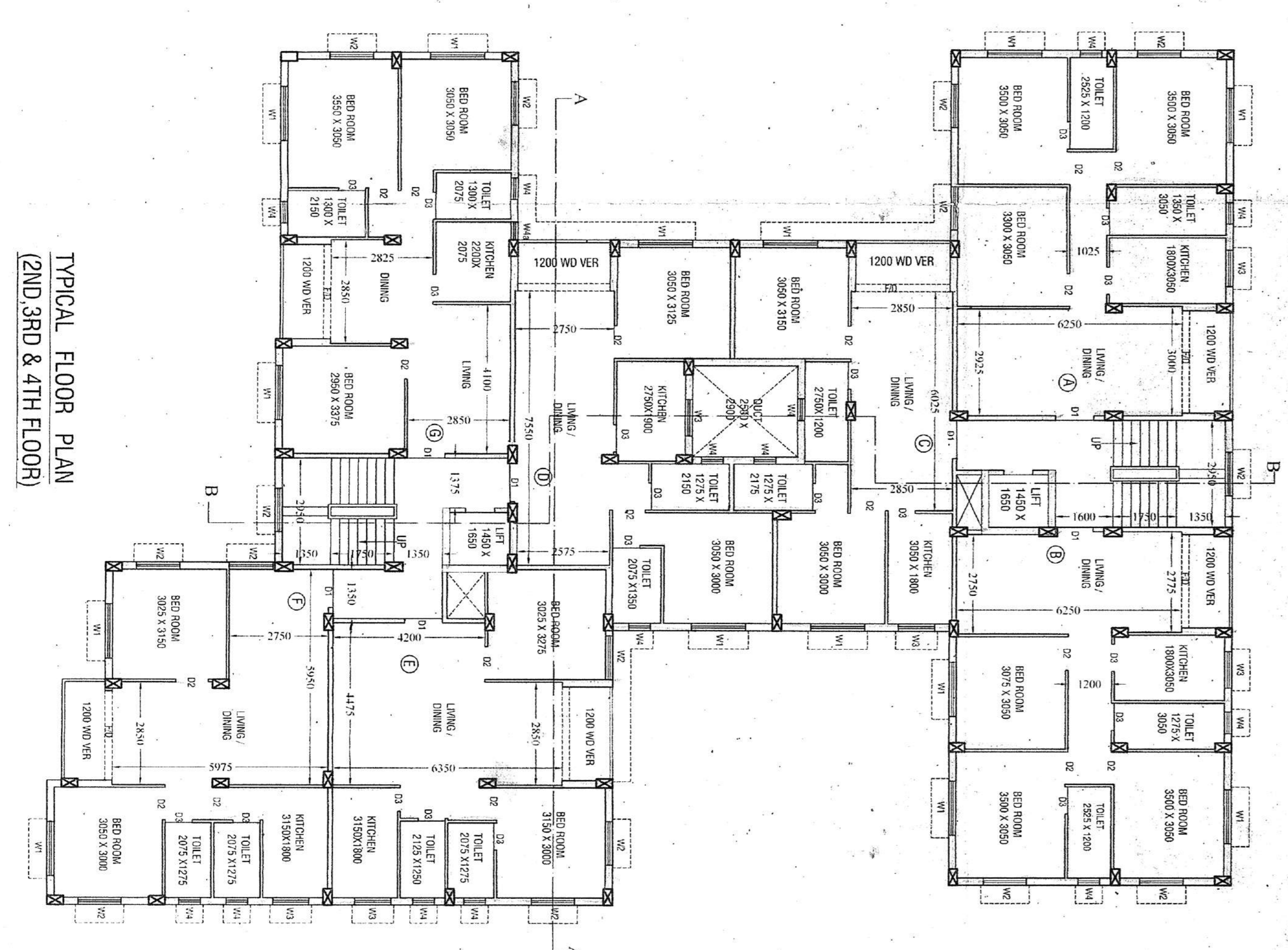
SITE PLAN



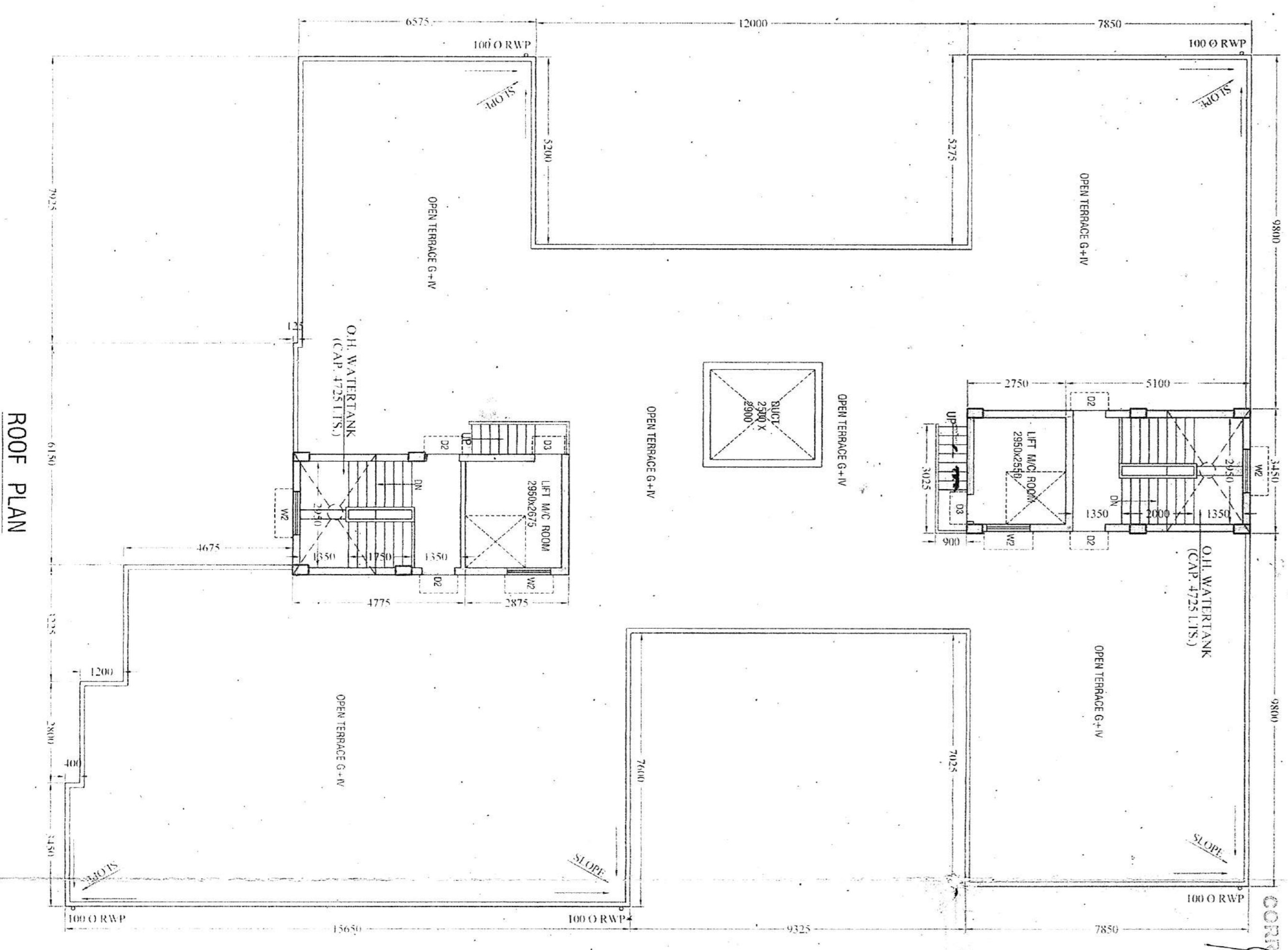
GROUND FLOOR PLAN



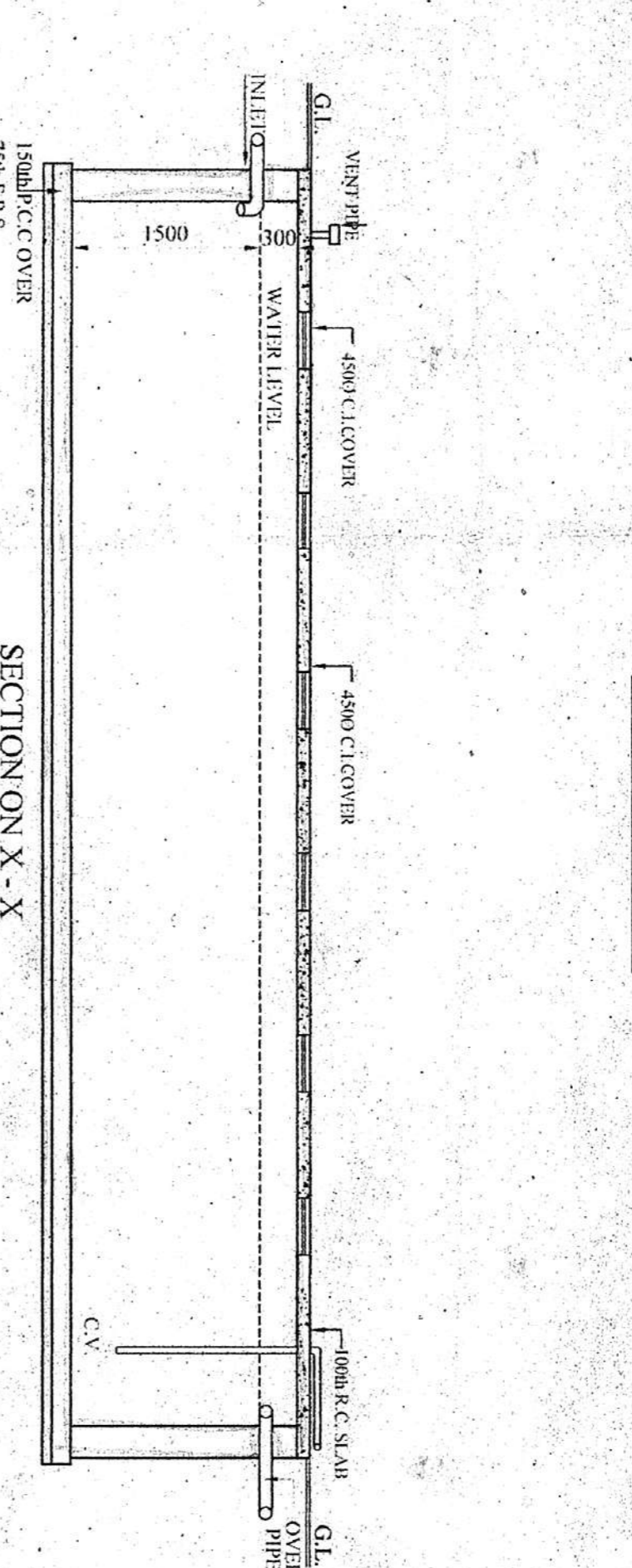
FIRST FLOOR PLAN



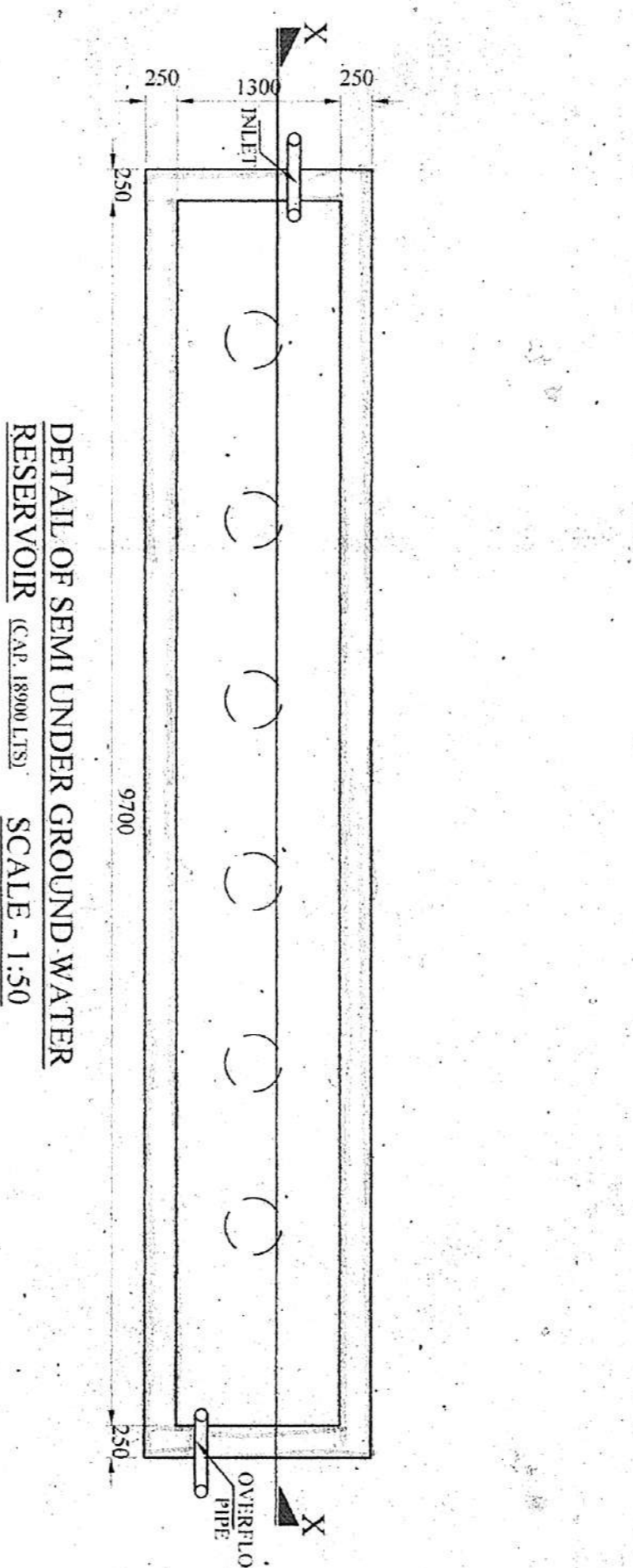
TYPICAL FLOOR PLAN (2ND, 3RD & 4TH FLOOR)



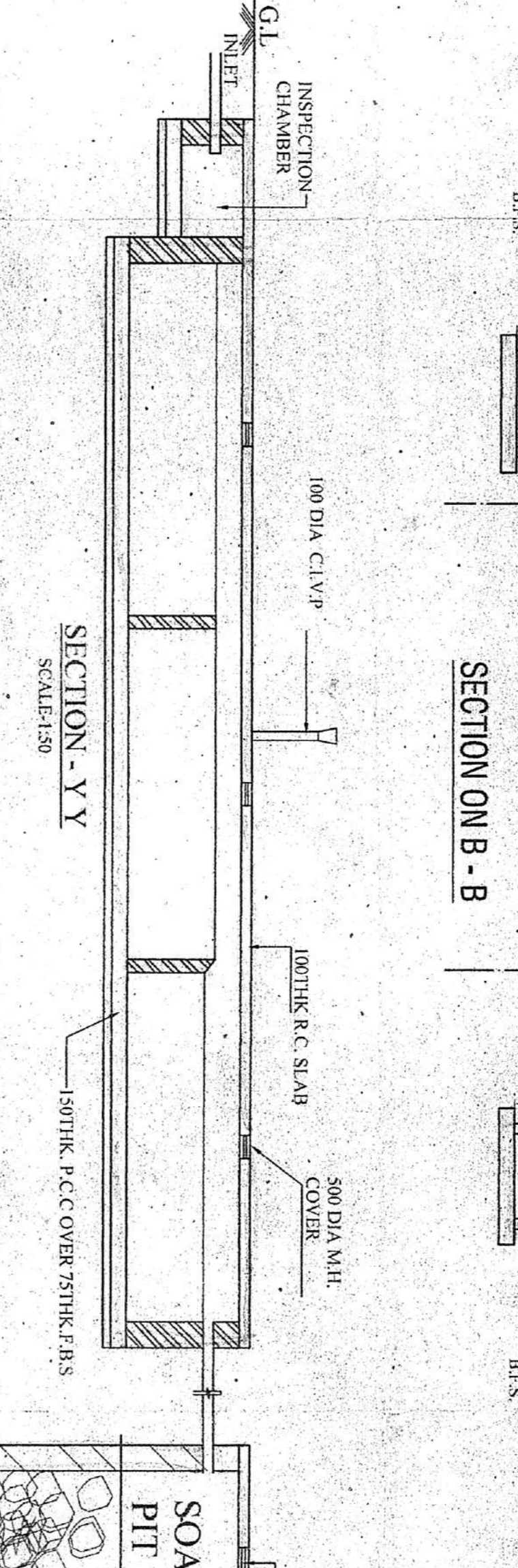
ROOF PLAN



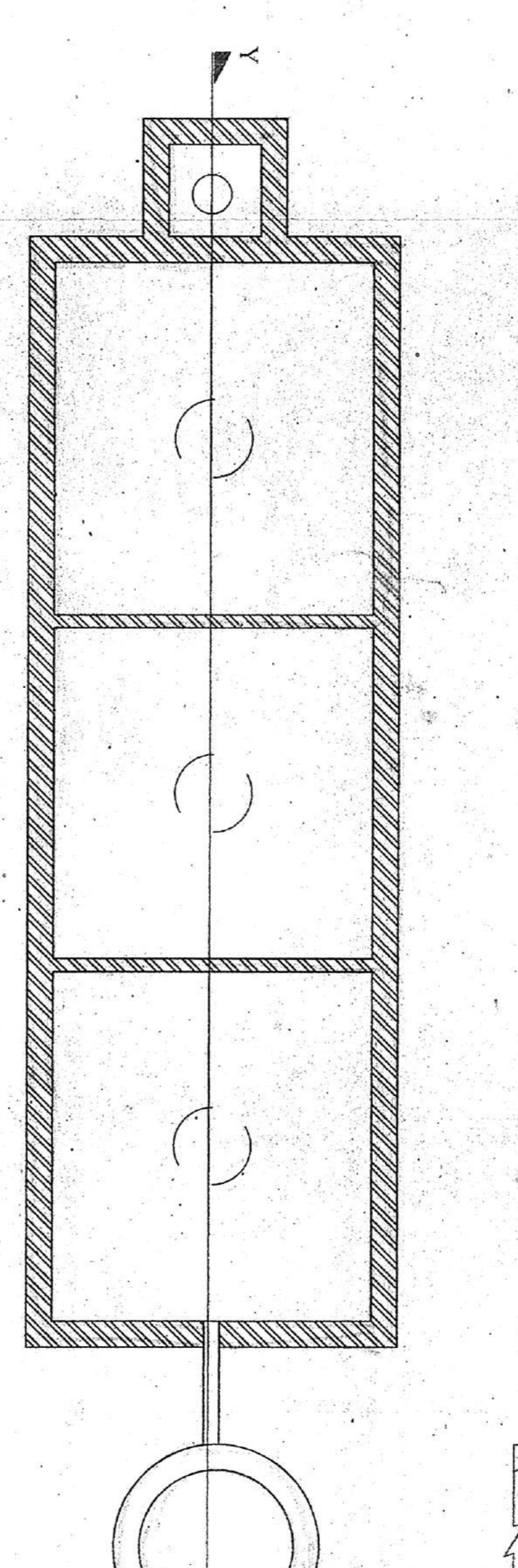
SECTION ON X-X



DETAIL OF SPILL UNDER GROUND WATER



SECTION ON Y-Y



DETAILS OF SEPTIC TANK AND SOAKPIT (150 USERS)

**AREA STATEMENT**

AREA OF LAND AS PER DEED = 1172.891 SQM (118.3012 ACRES)  
 AREA OF LAND AS PER DEED = 1172.891 SQM (118.3012 ACRES)  
 PERMISSIBLE GROUND COVERAGE = 65% OF LAND AREA = 762.479 SQM  
 PERMISSIBLE F.A.R. = 20  
 PROPOSED GROUND COVERAGE = 540.242 SQM, 7.25 SQM = 513.992 SQM

FL. NO.	TOTAL PL. AREA IN SQM	TOTAL FLOOR AREA IN SQM	LETTABLE AREA IN SQM	FLOOR AREA IN SQM	PERMITTED FLOOR AREA IN SQM	TOTAL AREA IN SQM
01	540.242	540.242	540.242	540.242	540.242	540.242
02	725.14	725.14	725.14	725.14	725.14	725.14
03	725.14	725.14	725.14	725.14	725.14	725.14
04	725.14	725.14	725.14	725.14	725.14	725.14
05	725.14	725.14	725.14	725.14	725.14	725.14
06	725.14	725.14	725.14	725.14	725.14	725.14
07	725.14	725.14	725.14	725.14	725.14	725.14
08	725.14	725.14	725.14	725.14	725.14	725.14
09	725.14	725.14	725.14	725.14	725.14	725.14
10	725.14	725.14	725.14	725.14	725.14	725.14
11	725.14	725.14	725.14	725.14	725.14	725.14
12	725.14	725.14	725.14	725.14	725.14	725.14
13	725.14	725.14	725.14	725.14	725.14	725.14
14	725.14	725.14	725.14	725.14	725.14	725.14
15	725.14	725.14	725.14	725.14	725.14	725.14
16	725.14	725.14	725.14	725.14	725.14	725.14
17	725.14	725.14	725.14	725.14	725.14	725.14
18	725.14	725.14	725.14	725.14	725.14	725.14
19	725.14	725.14	725.14	725.14	725.14	725.14
20	725.14	725.14	725.14	725.14	725.14	725.14
TOTAL	201.21	201.21	201.21	201.21	201.21	201.21

**NOTES**

1. ALL DIMENSIONS ARE IN METERS.
2. ALL DIMENSIONS ARE TO FACE UNLESS OTHERWISE SPECIFIED.
3. ALL DIMENSIONS ARE TO FACE UNLESS OTHERWISE SPECIFIED.
4. ALL DIMENSIONS ARE TO FACE UNLESS OTHERWISE SPECIFIED.
5. ALL DIMENSIONS ARE TO FACE UNLESS OTHERWISE SPECIFIED.
6. ALL DIMENSIONS ARE TO FACE UNLESS OTHERWISE SPECIFIED.
7. ALL DIMENSIONS ARE TO FACE UNLESS OTHERWISE SPECIFIED.
8. ALL DIMENSIONS ARE TO FACE UNLESS OTHERWISE SPECIFIED.
9. ALL DIMENSIONS ARE TO FACE UNLESS OTHERWISE SPECIFIED.
10. ALL DIMENSIONS ARE TO FACE UNLESS OTHERWISE SPECIFIED.
11. ALL DIMENSIONS ARE TO FACE UNLESS OTHERWISE SPECIFIED.
12. ALL DIMENSIONS ARE TO FACE UNLESS OTHERWISE SPECIFIED.

**STRUCTURAL CERTIFICATE**

THE STRUCTURAL DESIGNER HAS REVIEWED THE ARCHITECTURAL DRAWINGS AND FOUND THAT THE PROPOSED STRUCTURE IS SAFE AND SOUND AND WILL BE ABLE TO SUPPORT THE LOADS AND STRESSES TO WHICH IT WILL BE SUBJECTED DURING ITS USE.

**APPROVED**

Sanjayson Associates  
 Consultant Pvt. Ltd.

Sanjayson Associates  
 CONSULTANTS IN ARCHITECTURE & STRUCTURAL ENGINEERING  
 21, 22, 23, 24, 25, 26, 27, 28, 29, 30, 31, 32, 33, 34, 35, 36, 37, 38, 39, 40, 41, 42, 43, 44, 45, 46, 47, 48, 49, 50, 51, 52, 53, 54, 55, 56, 57, 58, 59, 60, 61, 62, 63, 64, 65, 66, 67, 68, 69, 70, 71, 72, 73, 74, 75, 76, 77, 78, 79, 80, 81, 82, 83, 84, 85, 86, 87, 88, 89, 90, 91, 92, 93, 94, 95, 96, 97, 98, 99, 100

Sanjayson Associates  
 CONSULTANTS IN ARCHITECTURE & STRUCTURAL ENGINEERING  
 21, 22, 23, 24, 25, 26, 27, 28, 29, 30, 31, 32, 33, 34, 35, 36, 37, 38, 39, 40, 41, 42, 43, 44, 45, 46, 47, 48, 49, 50, 51, 52, 53, 54, 55, 56, 57, 58, 59, 60, 61, 62, 63, 64, 65, 66, 67, 68, 69, 70, 71, 72, 73, 74, 75, 76, 77, 78, 79, 80, 81, 82, 83, 84, 85, 86, 87, 88, 89, 90, 91, 92, 93, 94, 95, 96, 97, 98, 99, 100

Sanjayson Associates  
 CONSULTANTS IN ARCHITECTURE & STRUCTURAL ENGINEERING  
 21, 22, 23, 24, 25, 26, 27, 28, 29, 30, 31, 32, 33, 34, 35, 36, 37, 38, 39, 40, 41, 42, 43, 44, 45, 46, 47, 48, 49, 50, 51, 52, 53, 54, 55, 56, 57, 58, 59, 60, 61, 62, 63, 64, 65, 66, 67, 68, 69, 70, 71, 72, 73, 74, 75, 76, 77, 78, 79, 80, 81, 82, 83, 84, 85, 86, 87, 88, 89, 90, 91, 92, 93, 94, 95, 96, 97, 98, 99, 100



Stacking of building materials on / beside the public road shall be in accordance with the provisions of the Traffic Ordinance as per rule.

The receipt of the building materials shall be issued by the contractor only after the receipt of completion certificate is issued by the concerned authority.

2. The receipt of the building materials shall be issued by the contractor only after the receipt of completion certificate is issued by the concerned authority.

APPROVED FOR THE MUNICIPALITY  
VALID UP TO 31/12/2018  
MAYOR

APPROVED FOR THE MUNICIPALITY  
VALID UP TO 31/12/2018  
MAYOR

APPROVED FOR THE MUNICIPALITY  
VALID UP TO 31/12/2018  
MAYOR